

Warning

1



! Warning !



Isolate power on track system  
**before** adding or removing **any** of  
these spotlights

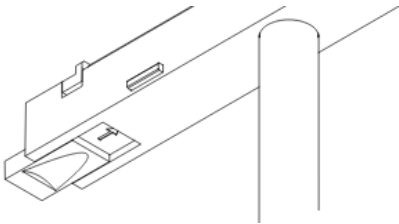


Adding Spotlight To Led-Trac

2a

Isolate power at source to track.

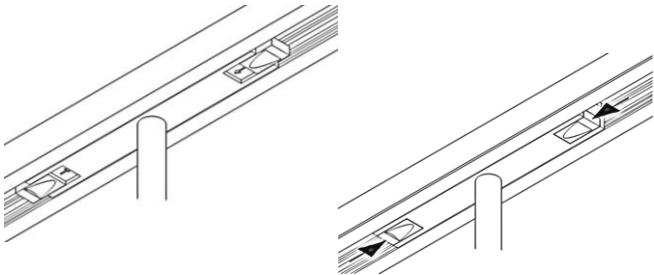
Pull out the two tabs either side of the track  
adaptor.



Adding Spotlight To Led-Trac

3a

Push into the Led-Trac and push both tabs  
inwards to secure.

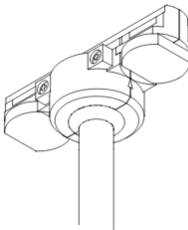


Adding Spotlight To 1 Circuit Track

2b

Isolate power at source to track.

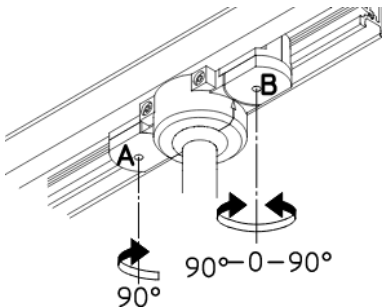
Turn both knobs to tuck in all connector pins.



Adding Spotlight To 1 Circuit Track

3b

Push into the track and twist both knobs to  
secure.



Track Identification

4

Led-Trac



1 Circuit Track

