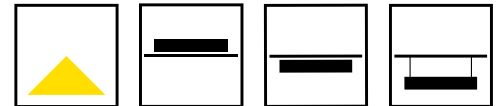


# MAGNETO

## LINEAR SYSTEM



### KEY FEATURES

- 1M, 2M or 3M Track lengths with magnetic clip-in luminaires
- Recessed, Surface mounted or suspended lighting track
- 48V low voltage LED lighting accessories including opal linear, collimated optics and adjustable spotlights
- A wide range of available accessories including 90° corners, 90° change-of-plane, T-junctions and crosses
- Control options include Fixed Output and DALI dimmable
- Matt Black or Matt White finishes as standard



**60 YEARS  
IN LIGHT**

CALL: +44 (0) 1235 55 37 69  
EMAIL: sales@optelma.co.uk  
ISSUE DATE: 21/01/20

#### HEAD OFFICE

The Science Park  
Abingdon  
Oxfordshire OX14 3YT  
United Kingdom

#### SHOWROOM

23 Bowling Green Lane  
Clerkenwell  
London EC1R 0BD  
United Kingdom

#### FRANCE

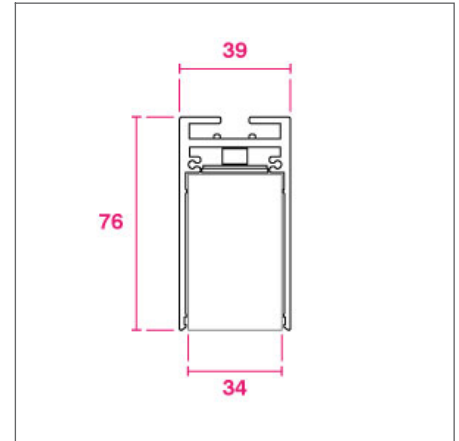
28 Rue Charles  
Baudelaire  
75012 Paris  
France

#### SWITZERLAND

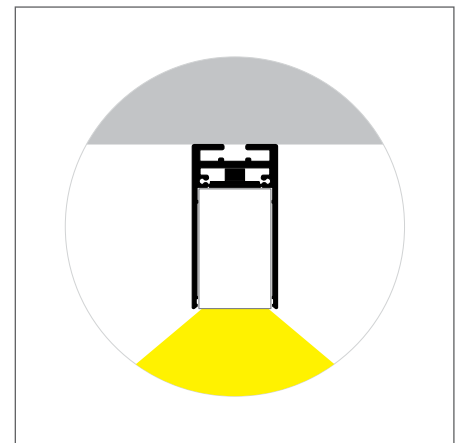
St. Urbangasse 53  
Postfach 1738  
CH-4502 Solothurn  
Switzerland

## MAGNETO SPECIFICATIONS

PRODUCT OPTIONS	
Dimensions (mm):	39 (W) x 76 (H) x 1000/2000/3000mm or <i>Made-to-Measure Lengths</i>
Cut-out (mm):	39 (W) x 76 (H)
Weight (kg):	<1.5 kg per Metre
Lifetime:	50,000 hrs
Mounting type:	Recessed, Surface Mounted, Suspended
Finish:	Matt Black, Matt White
Emergency:	N/A
Operating voltage:	48V
IP Rating:	IP20
Light source:	Assorted LED accessories listed below
Driver:	Fixed Output, DALI Dimming
Colour temperature:	2700K, 3000K, 4000K
Beam Angle:	N/A
Diffuser:	Opal Linear, Collimated Optic Linear, LED Spot
CRI:	90+
Optional Extras:	L, T or X Corners and Inner and Outer change-of-plane accessories



CROSS-SECTION DIMENSIONS (MM)

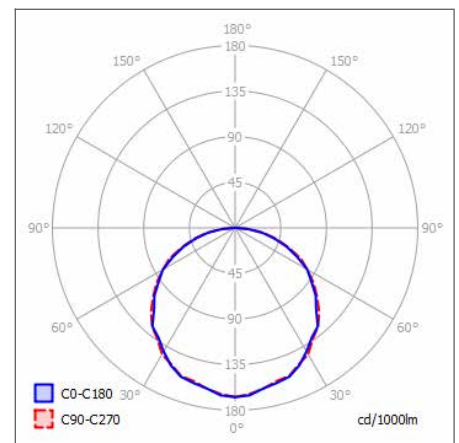


DISTRIBUTION

### CUSTOMISE YOUR MAGNETO SYSTEM WITH OUR RANGE OF LED ACCESSORIES

LED Light Source*	Dimensions (mm)	Output (lm)	Power (W)
MAG1 Opal Linear 640	34(W) x 56(H) x 640(L)	1480 lm	26 W
MAG2 Opal Linear 958	34(W) x 56(H) x 958(L)	1621 lm	39 W
MAG3 25°/40° Optic x6	34(W) x 55.5(H) x 163(L)	460 lm	8 W
MAG4 25°/40° Optic x12	34(W) x 55.5(H) x 322(L)	850 lm	15 W
MAG5 90° Adj. Optic 25°/40° x6	34(W) x 179(H) x 163(L)	460 lm	8 W
MAG6 90° Adj. Optic 25°/40° x12	34(W) x 179(H) x 322(L)	850 lm	15 W
MAG7 34Ø Spot 20°/40°	34(W) x 100(H) x 130(L)	360 lm	6 W
MAG8 34Ø Twin-Spot 20°/40°	34(W) x 100(H) x 140(L)	720 lm	12 W
MAG9 60Ø Spot 15°/28°/40°/60°	34(W) x 134(H) x 168(L)	830 lm	13 W

\* Outputs for 4000K LED



POLAR CURVE 4000K OPAL



**60 YEARS  
IN LIGHT**

CALL: +44 (0) 1235 55 37 69  
EMAIL: sales@optelma.co.uk  
ISSUE DATE: 21/01/20

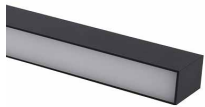
**HEAD OFFICE**  
The Science Park  
Abingdon  
Oxfordshire OX14 3YT  
United Kingdom

**SHOWROOM**  
23 Bowling Green Lane  
Clerkenwell  
London EC1R 0BD  
United Kingdom

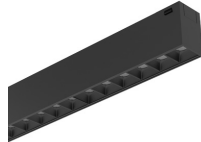
**FRANCE**  
28 Rue Charles  
Baudelaire  
75012 Paris  
France

**SWITZERLAND**  
St. Urbangasse 53  
Postfach 1738  
CH-4502 Solothurn  
Switzerland

**MAGNETO COMPONENTS**



**OPAL LINEAR LED**  
Magneto Opal LED  
Linear modules.  
MAG1/MAG2



**LINEAR OPTIC LED**  
Collimated Linear  
LED Optics.  
MAG3/MAG4



**ADJUSTABLE  
LINEAR OPTIC LED**  
Adjustable Collimated  
Linear LED Optics.  
MAG5/MAG6



**34° LED  
SPOTLIGHT**  
Small 6W Adjustable  
LED Spotlight.  
MAG7



**34° TWIN LED  
SPOTLIGHT**  
2 x 6W Adjustable  
LED Spotlight.  
MAG8



**60° LED  
SPOTLIGHT**  
Small 6W Adjustable  
LED Spotlight.  
MAG9



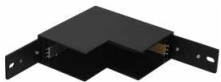
**L CORNER**  
90° Track Accessory  
123 x 123 x 76 mm.



**T CORNER**  
2x 90° Track  
Accessory  
140 x 90 x 76 mm.



**X CORNER**  
4x 90° Track  
Accessory  
140 x 140 x 76 mm.



**INNER CORNER**  
90° change-of-plane  
123 x 123 x 76 mm.



**OUTER CORNER**  
90° change-of-plane  
123 x 123 x 76 mm.



**MAGNETIC TRACK**  
48V magnetic linear  
lighting track in 1M,  
2M or 3M Lengths.



## MAGNETO SPECIFICATION CODE

AAAA - BB/C/D/E - F/GGG - HHHH/I								
AAAA PRODUCT ID	BB MOUNTING	C FINISH	D DRIVER	E DIFFUSER	F DIRECT LED	GGG CRI/ COLOUR	HHH LENGTH (mm)	I EMERGENCY
MAGN	RE SM SU	B W X*	F D	O C X*	MAG1 MAG2 MAG3 MAG4 MAG5 MAG6 MAG7 MAG8 MAG9	927 930 940	1000 2000 3000 XXXX* LENGTH OF TRACK	N/A

- \* **X** Custom Options - specify details alongside code
- MOUNTING **RE** Recessed, **SM** Surface Mounted, **SU** Suspended
- FINISH **B** Matt Black, **W** Matt White, **X** Other - specify details alongside code
- DRIVER **F** Fixed Output, **D** DALI
- DIFFUSER **O** Opal, **C** Collimated Optic,
- DIRECT LED **MAG1** Opal Linear 640, **MAG2** Opal Linear 958, **MAG3** 25°/40° Optic x6, **MAG4** 25°/40° Optic x12, **MAG5** 90° Adjustable Optic 25°/40° x6, **MAG6** 90° Adjustable Optic 25°/40° x12, **MAG7** 34Ø Spot 20°/40°, **MAG8** 34Ø Twin-Spot 20°/40°, **MAG9** 60Ø Spot 15°/28°/40°/60°,
- CRI / COLOUR **927** CRI 90+ Colour 2700K, **930** CRI 90+ Colour 3000K, **940** CRI 90+ Colour 4000K
- LENGTH Made-to-Measure length of the Track in millimetres
- EMERGENCY N/A
- +ACCESSORIES specify details alongside code:  
+L Corner, +T Corner, +X Corner, +Inner Corner, +Outer Corner

### STANDARD

Standard fixed option products for quick and easy specification. Point source LED and Linear LED solutions, organised into Track & Spots, Downlights, Recessed, Surface, Suspended and Wall mounted solutions.

### MADE-TO-MEASURE

Versatile systems and luminaires with custom specifications for project-specific lighting. Available in custom sizes and lengths, with many options including curves, corners, finishes, integrated accessories and more.

### BESPOKE

Bespoke luminaires demonstrating completely custom project solutions, designed with the clients from concept to delivery. Learn about the design process and inspire your next bespoke lighting project.



### 60 YEARS IN LIGHT

CALL: +44 (0) 1235 55 37 69  
EMAIL: sales@optelma.co.uk  
ISSUE DATE: 21/01/20

#### HEAD OFFICE

The Science Park  
Abingdon  
Oxfordshire OX14 3YT  
United Kingdom

#### SHOWROOM

23 Bowling Green Lane  
Clerkenwell  
London EC1R 0BD  
United Kingdom

#### FRANCE

28 Rue Charles  
Baudelaire  
75012 Paris  
France

#### SWITZERLAND

St. Urbangasse 53  
Postfach 1738  
CH-4502 Solothurn  
Switzerland