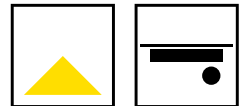




## DOSK 76

TRACK SPOTLIGHT



### KEY FEATURES

- Track mounted spotlight with 360° rotation & vertical driver
- XICATO Artist or PHILIPS Premium White LED chips
- Lumen outputs from 1300lm to 3095lm
- 10° Tight, 20° Standard, 40° Medium and 60° Wide Beam
- 2700K, 3000K, 3500K and 4000K colour temperatures
- Fixed Output, 1-10V or DALI Dimming options
- Honeycomb, Ring and Cone anti-glare accessories
- Matt White, Matt Black finishes



## PHILIPS XICATO



**60 YEARS**  
**IN LIGHT**

### FOR MORE INFORMATION OR TO TALK ABOUT A PROJECT:

CALL: +44 (0) 1235 55 37 69  
EMAIL: [sales@optelma.co.uk](mailto:sales@optelma.co.uk)

ISSUE DATE: 30/07/20

**HEAD OFFICE**  
The Science Park  
Abingdon  
Oxfordshire  
OX14 3YT

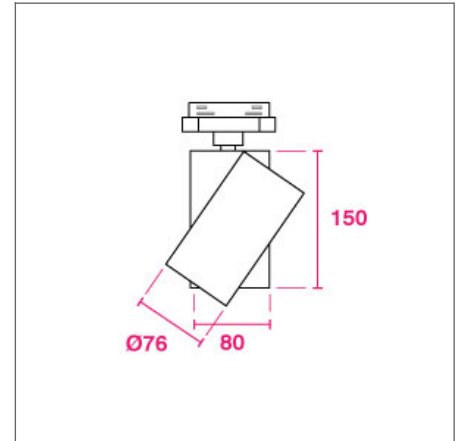
**SHOWROOM**  
23 Bowling Green Lane  
Clerkenwell  
London  
EC1R 0BD

**FRANCE**  
28 Rue Charles  
Baudelaire  
75012 Paris  
France

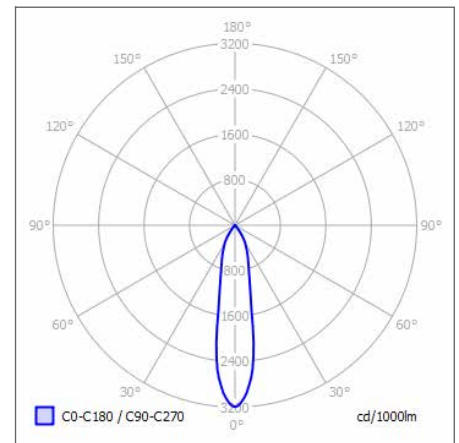
**SWITZERLAND**  
St. Urbangasse 53  
Postfach 1738  
CH-4502 Solothurn  
Switzerland

## DOSK 76 TRACKSPOT SPECIFICATIONS

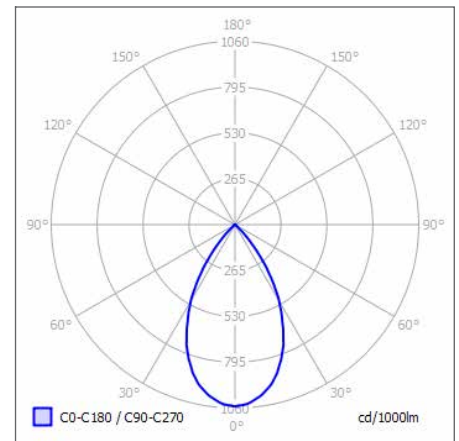
| PRODUCT OPTIONS     |  |
|---------------------|--|
| Dimensions:         | Ø76 x 150mm (H)  |
| Cut-out:            | (N/A)  |
| Weight:             | < 1.5 kg   |
| Lifetime:           | 50,000 hrs   |
| Mounting type:      | Track Mounted (1-Circuit, 3-Circuit / 3-Circuit DALI, sold separately) |
| Finish:             | Matt Black, Matt White   |
| Emergency:          | N/A  |
| Operating voltage:  | 230V   |
| IP Rating:          | IP20   |
| Light source:       | Xicato Artist LED, Philips Premium White LED                           |
| Source Lumens:      | 3400 lm  |
| Delivered Lumens:   | Varies - see table below   |
| Power:              | 30 W   |
| Efficiency:         | up to 112 lm/W   |
| Driver:             | Fixed Output, DALI dimmable, 1-10V dimmable                            |
| Colour temperature: | 2700K, 3000K, 3500K, 4000K   |
| Beam Angle:         | Tight Beam 10°, Standard 20°, Medium Beam 40°, Wide Beam 60°           |
| Diffuser:           | N/A  |
| CRI:                | Xicato Artist CRI 95+, Philips CRI 90+                                 |
| Optional Extras:    | Anti-glare accessories: Honeycomb louver, Ring or Cone                 |



CROSS-SECTION DIMENSIONS (MM)



POLAR CURVE 4000K 20°



POLAR CURVE 4000K 60°

### CHOOSE A PROJECT SPECIFIC LIGHT OUTPUT

| LED Source            | Output (lm)* | Power (W) | Drive current (mA) |
|-----------------------|--------------|-----------|--------------------|
| Xicato Artist CRI 95+ | 1300 lm      | 13.3 W    | 700 mA             |
| Xicato Artist CRI 95+ | 2000 lm      | 20.0 W    | 1050 mA            |
| Xicato Artist CRI 95+ | 3000 lm      | 30.5 W    | 1050 mA            |
| Philips CRI 90+       | 1653 lm      | 11.4 W    | 350 mA             |
| Philips CRI 90+       | 2298 lm      | 16.5 W    | 500 mA             |
| Philips CRI 90+       | 3095 lm      | 23.7 W    | 700 mA             |

\*Luminaire source lumens at 4000K. Colour temperature choice will affect output.



**60 YEARS**  
**IN LIGHT**

#### FOR MORE INFORMATION OR TO TALK ABOUT A PROJECT:

CALL: +44 (0) 1235 55 37 69  
EMAIL: sales@optelma.co.uk  
ISSUE DATE: 30/07/20

**HEAD OFFICE**  
The Science Park  
Abingdon  
Oxfordshire  
OX14 3YT

**SHOWROOM**  
23 Bowling Green Lane  
Clerkenwell  
London  
EC1R 0BD

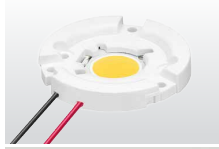
**FRANCE**  
28 Rue Charles  
Baudelaire  
75012 Paris  
France

**SWITZERLAND**  
St. Urbangasse 53  
Postfach 1738  
CH-4502 Solothurn  
Switzerland

## DOSK 76 TRACKSPOT COMPONENTS



**XICATO XTM LED**  
The Xicato Artist LED range, CRI 95.



**PHILIPS SLM LED**  
The Philips Fortimo LED range, CRI 90.



**PREMIUM DRIVERS**  
Fixed Output and DALI drivers.



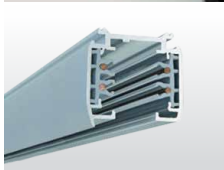
**CONE ANTI-GLARE**  
Anti-glare accessory. Specification Code: +C



**RING ANTI-GLARE**  
Anti-glare accessory. Specification Code: +R



**HONEYCOMB ANTI-GLARE**  
Anti-glare accessory. Specification Code: +H



**3 CIRCUIT TRACK**  
230V Powergear 3-circuit track, sold separately.



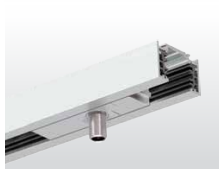
**RECESSED 3 CIRCUIT TRACK**  
230V Powergear 3-circuit track, sold separately.



**3 CIRCUIT DALI TRACK**  
230V Powergear 3-circuit DALI track, sold separately.



**RECESSED 3 CIRCUIT DALI TRACK**  
230V Powergear 3-circuit DALI track, sold separately.



**1 CIRCUIT DALI TRACK**  
230V Powergear 1-circuit DALI track, sold separately.



**FOR MORE INFORMATION OR TO TALK ABOUT A PROJECT:**

CALL: +44 (0) 1235 55 37 69  
EMAIL: [sales@optelma.co.uk](mailto:sales@optelma.co.uk)

ISSUE DATE: 30/07/20

**HEAD OFFICE**  
The Science Park  
Abingdon  
Oxfordshire  
OX14 3YT

**SHOWROOM**  
23 Bowling Green Lane  
Clerkenwell  
London  
EC1R 0BD

**FRANCE**  
28 Rue Charles  
Baudelaire  
75012 Paris  
France

**SWITZERLAND**  
St. Urbangasse 53  
Postfach 1738  
CH-4502 Solothurn  
Switzerland

## DOSK 76 TRACKSPOT SPECIFICATION CODE

| AAAA - BB/C/D/E - F/GGG - HHH/I |                |             |             |                    |                    |                          |                               |                |
|---------------------------------|----------------|-------------|-------------|--------------------|--------------------|--------------------------|-------------------------------|----------------|
| AAAA<br>PRODUCT ID              | BB<br>MOUNTING | C<br>FINISH | D<br>DRIVER | E<br>BEAM<br>ANGLE | F<br>DIRECT<br>LED | GGG<br>CRI/<br>COLOUR    | HHH<br>DIAMETER/<br>SIZE (mm) | I<br>EMERGENCY |
| D090<br>D095                    | TM             | B<br>W      | F<br>D<br>1 | T<br>S<br>M<br>W   | L<br>M<br>H<br>X*  | 927<br>930<br>935<br>940 | 075                           | E              |

- \* **X** Custom Options - specify details alongside code
- PRODUCT ID **D090** DOSK Trackspot Philips CRI 90+, **D095** DOSK Trackspot Xicato CRI 95+
- MOUNTING **TM** Track Mounted - choose track product separately
- FINISH **B** Matt Black, **W** Matt White
- DRIVER **F** Fixed Output, **D** DALI dimmable, **1** 1-10V dimmable
- BEAM ANGLE **T** 10° Tight Beam, **S** 20° Standard Beam, **M** 40° Medium Beam, **W** 60° Wide Beam
- DIRECT LED **L** Low power 1300lm/1653lm, **M** Medium power 2000lm/2298lm, **H** High power 3000/3095lm
- CRI / COLOUR **927** CRI 90+ Colour 2700K, **930** CRI 90+ Colour 3000K, **935** CRI 90+ Colour 3500K, **940** CRI 90+ Colour 4000K
- DIAMETER / SIZE Spot diameter in millimetres
- EMERGENCY **E** Separate Emergency Module

Specify anti-glare accessories alongside code:

**+C** Cone Anti-Glare, **+R** Ring Anti-Glare, **+H** Honeycomb Anti-Glare

### STANDARD

Standard fixed option products for quick and easy specification. Point source LED and Linear LED solutions, organised into Track & Spots, Downlights, Recessed, Surface, Suspended and Wall mounted solutions.

### MADE-TO-MEASURE

Versatile systems and luminaires with custom specifications for project-specific lighting. Available in custom sizes and lengths, with many options including curves, corners, finishes, integrated accessories and more.

### BESPOKE

Bespoke luminaires demonstrating completely custom project solutions, designed with the clients from concept to delivery. Learn about the design process and inspire your next bespoke lighting project.



**60 YEARS  
IN LIGHT**

#### FOR MORE INFORMATION OR TO TALK ABOUT A PROJECT:

CALL: +44 (0) 1235 55 37 69  
EMAIL: sales@optelma.co.uk

ISSUE DATE: 30/07/20

**HEAD OFFICE**  
The Science Park  
Abingdon  
Oxfordshire  
OX14 3YT

**SHOWROOM**  
23 Bowling Green Lane  
Clerkenwell  
London  
EC1R 0BD

**FRANCE**  
28 Rue Charles  
Baudelaire  
75012 Paris  
France

**SWITZERLAND**  
St. Urbangasse 53  
Postfach 1738  
CH-4502 Solothurn  
Switzerland