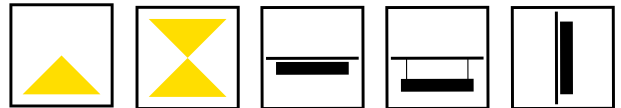


# TATOO 62+

MODULAR, CONTINUOUS & MADE-TO-MEASURE



## KEY FEATURES

- Surface, Suspended and Wall mounted Direct-Indirect lighting
- Standard modular lengths, continuous connected modules or made-to-measure project-specific lengths
- Direct-Indirect lighting or Direct only with PHILIPS Fortimo LED boards and compact PHILIPS Xitanium Fixed Output drivers
- DALI dimmable option, or Casambi bluetooth control
- Integrated 3-hour emergency conversions available
- Matt White, Matt Black and Anodised Aluminium standard finishes, with many more on request including RAL & vinyl
- UGR compliant with up to 147 LL/CW (Direct)



**PHILIPS CASAMBI**

**60 YEARS  
IN LIGHT**

CALL: +44 (0) 1235 55 37 69  
EMAIL: sales@optelma.co.uk  
ISSUE DATE: 03/11/20

### HEAD OFFICE

The Science Park  
Abingdon  
Oxfordshire OX14 3YT  
United Kingdom

### SHOWROOM

23 Bowling Green Lane  
Clerkenwell  
London EC1R 0BD  
United Kingdom

### FRANCE

28 Rue Charles  
Baudelaire  
75012 Paris  
France

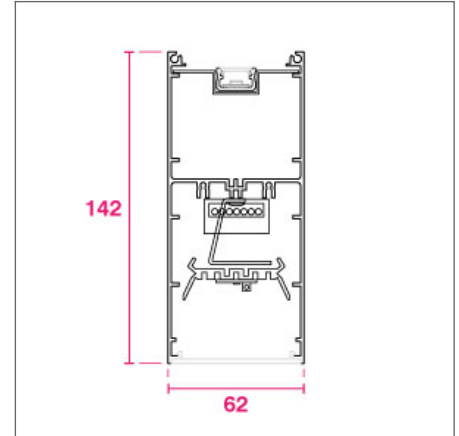
### SWITZERLAND

St. Urbangasse 53  
Postfach 1738  
CH-4502 Solothurn  
Switzerland

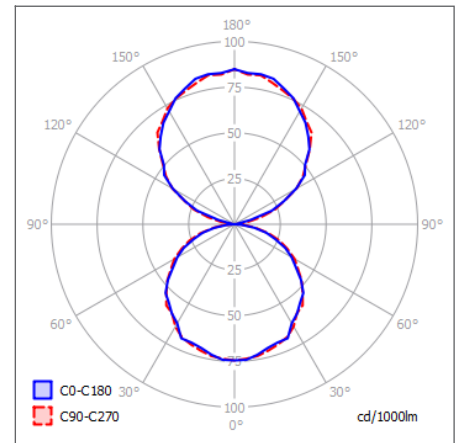
## TATOO 62+ SPECIFICATIONS

### PRODUCT OPTIONS

Dimensions (mm):	62 (W) x 142 (H)		
Cut-out (mm):	N/A		
Weight (kg):	3.6 kg per Metre		
Lifetime:	50,000 hrs		
Mounting type:	Surface (Direct only), Suspended, Wall Mounted (Direct-Indirect)		
Finish:	White (RAL9016), White (RAL9010), Black, Anodised Aluminium		
Emergency:	DALI or Standard 3 hour emergency conversion (30% driver output)		
Operating voltage:	230V		
IP Rating:	IP20		
Direct Light source:	Philips High Efficiency LED [HE]	Philips High Output LED [HO]	
Source Lumens/M:	2275 [4000K]	3850 [4000K]	
Delivered Lumens/M:	1825 [MPO]   1571 [OPAL]	3088 [MPO]	2659 [OPAL]
Power Watts/M:	12.6	21.0	
Indirect Light source:	Opteline LED [OB], 1582lm/M (1093 delivered Opal diff.), 15.2W/M		
Driver:	Fixed Output, DALI Dim. (Direct only or Direct & Indirect), Casambi		
Colour temperature:	3000K, 4000K		
Diffuser:	OPAL (LOR 69.07%), MPO (LOR 80.2%)		
CRI:	80+		
Optional Extras: <i>(On request, Lead times will be affected)</i>	Collimated optic downlights, CRI90+, Tuneable White, RGB, RGBW, 2700K, 3500K, 5000K, 6000K LED, integrated Track, PIR/Daylight sensors, IP rated up to IP65, alternative finishes. All on request.		



SURFACE/SUSP. CROSS-SECTION (MM)



POLAR CURVE 4000K OPAL DIR-IND

### MODULAR LENGTHS WITH FAST-TRACK LEAD TIMES

Module Lengths	MPO [HO] Direct only*	OPAL [HO] Direct only*	OPAL [OB] Indirect
850	2647lm/18W	2280lm/18W	951lm/13W
1130	3529lm/24W	3040lm/24W	1257lm/17W
1410	4411lm/30W	3800lm/30W	1563lm/22W
1690	5293lm/36W	4560lm/36W	1869lm/26W
1970	6175lm/42W	5320lm/42W	2175lm/30W
2250	7057lm/48W	6080lm/48W	2481lm/35W
2530	7939lm/54W	6840lm/54W	2787lm/39W
2810	8821lm/60W	7600lm/60W	3093lm/43W

### CONNECTED CONTINUOUS MODULAR SYSTEM

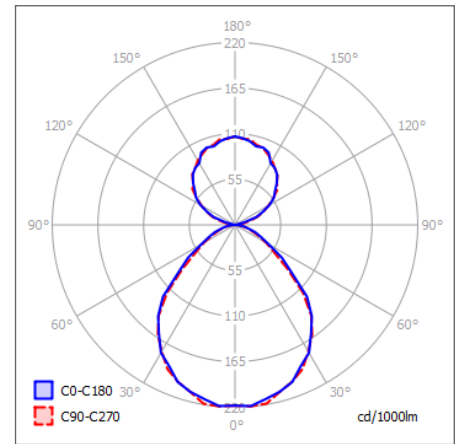
Start/End Modules	MPO [HO] Direct only**	OPAL [HO] Direct only**	OPAL [OB] Indirect
1130	3529lm/24W	3040lm/24W	1257lm/17W
1410	4411lm/30W	3800lm/30W	1563lm/22W
1690	5293lm/36W	4560lm/36W	1869lm/26W
1970	6176lm/42W	5320lm/42W	2175lm/30W
2810	8821lm/60W	7600lm/60W	3093lm/43W
<b>90° Corner</b>			
590x590	3529lm/24W	3040lm/24W	1257lm/17W
<b>Middle Modules</b>			
2805	8821lm/60W	7600lm/60W	3093lm/43W
2805 Em.	100lm [Em.]	168lm [Em.]	N/A (DIR only)

\* Delivered lumen outputs with Philips Fortimo High Output 4000K LED. Modular lead times from 2 weeks. Custom options affect price & lead time.  
 \*\* For connected continuous system 3-hour DALI Emergency is available in middle modules only. Be sure to specify START/MIDDLE/END/LEFT/RIGHT.

## CUSTOM LIGHT SOURCES FOR MADE-TO-MEASURE SOLUTIONS

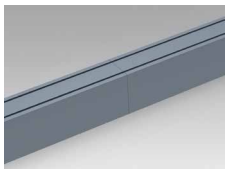
Light Source	LED Source Output	Additional Information
Opteline Board 24V LED	1582lm/M / 15.2W/M	50mm cut-points
Helvar Tuneable White LED	4165lm/M / 21.7W/M	2700K to 6500K
LEE Tuneable White LED	1887lm/M / 10.5W/M	2700K to 5700K
RGB 24V LED Tape	470lm/M / 15W/M	62.5mm cut-points
RGBW 24V LED Tape	750lm/M / 30.8W/M	62.5mm cut-points
Mini Fixed Downlight Ø52	105lm / 4.5W	20°, 38°, 60° beam angles
Integrated 230V Track	See spotlight range online	1-circuit or 3-circuit DALI

\* Source lumens output at 4000K. Custom options affect price & lead time. We have 60+ years experience in bespoke/made-to-measure lighting, so if what you want is not listed, please enquire.

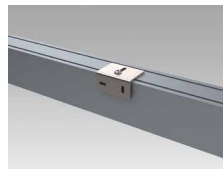


POLAR CURVE 4000K MPO DIR. OPAL IND.

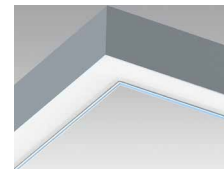
## TATOO 62+ COMPONENTS



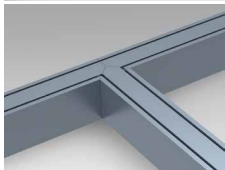
**MECHANICAL COUPLER**  
Flush connections between modules.



**CORNICE SUPPORT**  
Fixing bracket for wall mounting the profile.



**MITRED CORNER**  
Let continuous light turn corners between 81° and 180°.



**MITRED T-JUNCTION**  
Join more than one linear lighting section.



**CHANGE-OF-PLANE**  
Continuous lighting from ceiling to wall.



**RGB LIGHTING**  
24V RGB LED lighting options available.



**INTEGRATED DOWNLIGHTS**  
Fixed miniature downlights.



**COLLIMATED DOWNLIGHTS**  
Integrated fixed LED optics (1, 2, 5 or 10).



**PIR SENSOR**  
Miniature Passive Infrared sensor for motion detection.

## INTEGRATED EMERGENCY CONVERSIONS



The integrated Emergency conversion (Standard/DALI) will run the driver at 30% output for 3-hours. The converted drivers output is shared equally across each connected board, illuminating the entire length in emergency mode. This improves uniformity to comply with emergency regulations.

A maximum of 10 boards (2810mm module) can be connected to one emergency conversion kit. Longer lengths will require multiple emergency conversions.

Module lengths	Medium Power Emergency*	High Power Emergency*
850mm	99.45lm	168.3lm
1130mm	99.45lm	168.3lm
1410mm	99.45lm	168.3lm
1690mm	99.45lm	168.3lm
1970mm	99.45lm	168.3lm
2250mm	99.45lm	168.3lm
2530mm	99.45lm	168.3lm
2810mm	99.45lm	168.3lm



**60 YEARS IN LIGHT**

CALL: +44 (0) 1235 55 37 69  
EMAIL: sales@optelma.co.uk  
ISSUE DATE: 03/11/20

**HEAD OFFICE**  
The Science Park  
Abingdon  
Oxfordshire OX14 3YT  
United Kingdom

**SHOWROOM**  
23 Bowling Green Lane  
Clerkenwell  
London EC1R 0BD  
United Kingdom

**FRANCE**  
28 Rue Charles  
Baudelaire  
75012 Paris  
France

**SWITZERLAND**  
St. Urbangasse 53  
Postfach 1738  
CH-4502 Solothurn  
Switzerland

## TATOO 62+ SPECIFICATION CODE

AAAA - BB/C/D/E - F/GGG - F/GGG - HHHH/I										
AAAA PRODUCT ID	BB MOUNTING	C FINISH	D DRIVER	E DIFFUSER	F DIRECT LED	GGG CRI/ COLOUR	F INDIRECT LED	GGG CRI/ COLOUR	HHH LENGTH (mm)	I EMERGENCY
TA62	SM SP WM	B	F	O	E	827	O	827	0850	E
		W	D	M	O	830	X*	830	1130	DE
		WW	DD		X*	840		840	1410	
		A	C			8TW		X*	1690	
		X*				8RW			1970	
						X*			2250	
									2530	
									2810	
									X*	

**MOUNTING** 'SM' Surface Mounted, 'SP' Suspended Parallel, 'WM' Wall Mounted  
**FINISH** 'B' Matt Black, 'W' White RAL 9016, 'WW' White RAL 9010, 'A' Anodised Aluminium, 'X' Custom Finish  
**DRIVER** 'F' Fixed Output, 'D' DALI, 'DD' DALI Direct & Indirect, 'C' Casambi control  
**DIFFUSER** 'O' Opal, 'M' MPO  
**DIRECT LED** 'E' High Efficiency 650lm boards, 'O' High Output 1100lm boards, 'X' Custom - specify details alongside code  
**CRI / COLOUR** '827' CRI 80+ Colour 2700K, '830' CRI 80+ Colour 3000K, '840' CRI 80+ Colour 4000K, '8TW' CRI 80+ Tuneable White 2700K-6500K, '8RW' CRI 80+ RGBW LED, 'X' Custom - specify details alongside code  
**INDIRECT LED** 'O' Opteline LED boards, 'X' Custom - specify details alongside code  
**CRI / COLOUR** '827' CRI 80+ Colour 2700K, '830' CRI 80+ Colour 3000K, '840' CRI 80+ Colour 4000K  
**LENGTH** Modular lengths in millimetres, 'X' Specify custom length  
**EMERGENCY** 'E' Standard Integrated Emergency, 'DE' DALI Integrated Emergency

For through-wired continuous modules, specify: 'START', 'MIDDLE', 'END', 'LEFT' or 'RIGHT' to build light systems

### STANDARD

Standard fixed option products for quick and easy specification. Point source LED and Linear LED solutions, organised into Track & Spots, Downlights, Recessed, Surface, Suspended and Wall mounted solutions.

### MADE-TO-MEASURE

Versatile systems and luminaires with custom specifications for project-specific lighting. Available in custom sizes and lengths, with many options including curves, corners, finishes, integrated accessories and more.

### BESPOKE

Bespoke luminaires demonstrating completely custom project solutions, designed with the clients from concept to delivery. Learn about the design process and inspire your next bespoke lighting project.



### 60 YEARS IN LIGHT

CALL: +44 (0) 1235 55 37 69  
 EMAIL: sales@optelma.co.uk  
 ISSUE DATE: 03/11/20

#### HEAD OFFICE

The Science Park  
 Abingdon  
 Oxfordshire OX14 3YT  
 United Kingdom

#### SHOWROOM

23 Bowling Green Lane  
 Clerkenwell  
 London EC1R 0BD  
 United Kingdom

#### FRANCE

28 Rue Charles  
 Baudelaire  
 75012 Paris  
 France

#### SWITZERLAND

St. Urbangasse 53  
 Postfach 1738  
 CH-4502 Solothurn  
 Switzerland