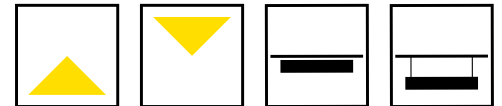




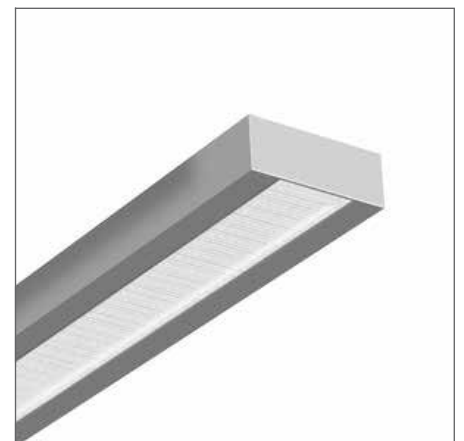
# SAM 130

## LINEAR SYSTEM



### KEY FEATURES

- Surface Mounted and Suspended Luminaires
- Standard modular lengths with Fast-Track lead times
- Direct or Direct-Indirect lighting with Medium/High Power LED
- Opal, MPO, Satin Louver and Asymmetric Wallwash options
- Compact fixed output drivers, or a range of dimming options including DALI, 1-10V, Touch-Dim or Casambi control
- Available on request - made-to-measure lengths, corner modules, multisensors, Integrated emergency & downlights
- White, Black, Silver, Graphite, Copper and Champagne finishes



**CASAMBI**

**60 YEARS  
IN LIGHT**

#### FOR MORE INFORMATION OR TO TALK ABOUT A PROJECT:

CALL: +44 (0) 1235 55 37 69  
EMAIL: [sales@optelma.co.uk](mailto:sales@optelma.co.uk)

ISSUE DATE: 11/09/20

**HEAD OFFICE**  
The Science Park  
Abingdon  
Oxfordshire  
OX14 3YT

**SHOWROOM**  
23 Bowling Green Lane  
Clerkenwell  
London  
EC1R 0BD

**PARIS OFFICE**  
28 Rue Charles  
Baudelaire  
75012 Paris  
France

**SWISS OFFICE**  
St. Urbangasse 53  
Postfach 1738  
CH-4502 Solothurn  
Switzerland

## SAM 130 SPECIFICATIONS

PRODUCT OPTIONS	
Dimensions (mm):	130 (W) x 55 (H) x Modular lengths below*
Cut-out (mm):	N/A
Lifetime:	50,000 hrs
Mounting type:	Surface, Suspended
Finish:	White, Black, Silver, Champagne Gold, Copper, Graphite
Emergency:	Integrated emergency kit
Operating voltage:	230V
IP Rating:	IP20
Light source:	Medium Power LED, High Power LED
Driver:	Fixed Output, 1-10V, DALI, Touch Dim, Casambi control
Colour temperature:	2200K, 2700K, 3000K, 3500K, 4000K, 6500K
Beam Angle:	Direct [DIR 100%], Direct-Indirect [DIR 40%-IND 60%]
Diffuser:	Opal, MPO, Asymmetric Wallwash or Satin Louver (direct)
CRI:	CRI80, CRI90 or Full Spectrum
Optional Extras:	Integrated sensors, spotlights/downlights and 90° corners on request

\*Made-to-measure lengths available on request.

### CHOOSE A MODULAR LENGTH AND LIGHT SOURCE

DIR Modules	Medium Power MPO*	High Power MPO*	Medium Power OPAL*	High Power OPAL*
890	2820lm/33W	3650lm/44W	3040lm/33W	3930lm/44W
1182	3760lm/42W	4870lm/57W	4050lm/42W	5240lm/57W
1475	4700lm/51W	6080lm/69W	5060lm/51W	6560lm/69W
1765	5640lm/60W	7300lm/81W	6080lm/60W	7870lm/81W
2055	6580lm/75W	8520lm/101W	7090lm/75W	9180lm/101W

DIR-IND Modules	Medium Power MPO*	High Power MPO*	Medium Power OPAL*	High Power OPAL*
890	7040lm/60W	9120lm/81W	7260lm/60W	9400lm/81W
1182	9390lm/84W	12160lm/114W	9680lm/84W	12540lm/114W
1475	11740lm/102W	15200lm/138W	12100lm/102W	15670lm/138W
1765	14080lm/120W	18240lm/162W	14520lm/120W	18800lm/162W
2055	16430lm/144W	21280lm/195W	16940lm/144W	21940lm/195W

\*Luminaire luminous flux at 4000K. Satin louver or Asymmetric outputs available on request.



#### FOR MORE INFORMATION OR TO TALK ABOUT A PROJECT:

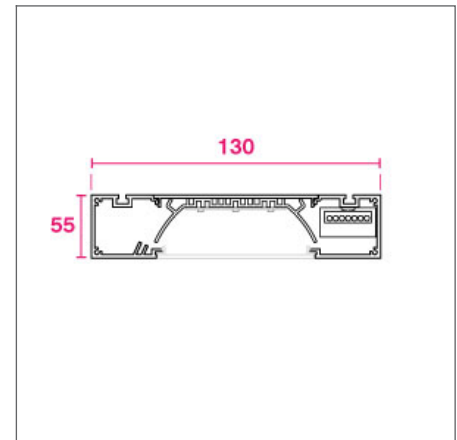
CALL: +44 (0) 1235 55 37 69  
 EMAIL: sales@optelma.co.uk  
 ISSUE DATE: 11/09/20

**HEAD OFFICE**  
 The Science Park  
 Abingdon  
 Oxfordshire  
 OX14 3YT

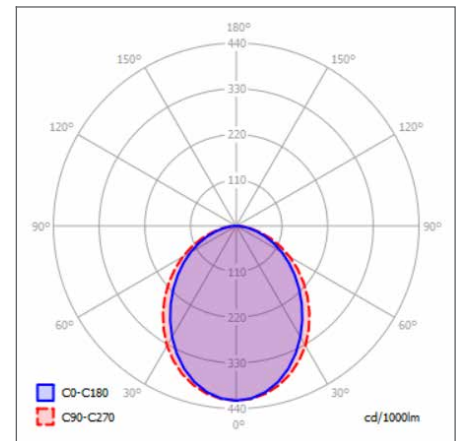
**SHOWROOM**  
 23 Bowling Green Lane  
 Clerkenwell  
 London  
 EC1R 0BD

**PARIS OFFICE**  
 28 Rue Charles  
 Baudelaire  
 75012 Paris  
 France

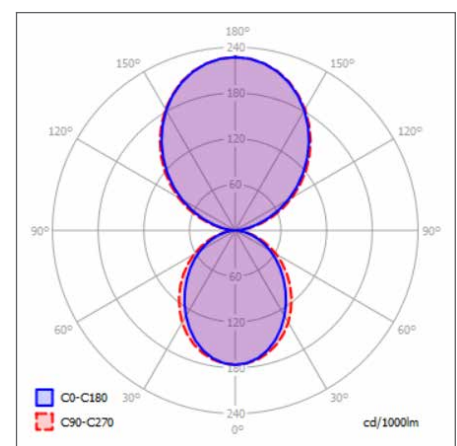
**SWISS OFFICE**  
 St. Urbangasse 53  
 Postfach 1738  
 CH-4502 Solothurn  
 Switzerland



SURFACE DIRECT CROSS-SECTION (MM)

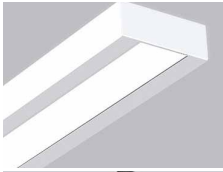


POLAR CURVE DIRECT 100%

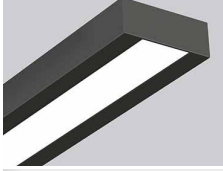


POLAR CURVE DIRECT 40% INDIRECT 60%

**SAM 130 COMPONENTS**



**MATT WHITE**  
Powder-coated Matt White painted finish.



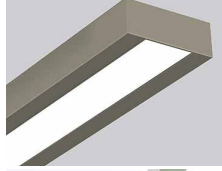
**GRAPHITE**  
Powder-coated graphite finish.



**SATIN LOUVER**  
Anti-glare Satin Louver on request.



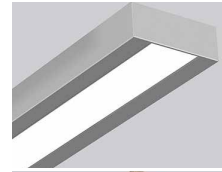
**MATT BLACK**  
Powder-coated Matt Black painted finish.



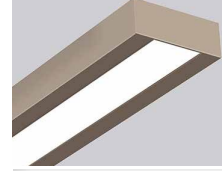
**CHAMPAGNE**  
Powder-coated champagne finish.



**90° CORNER**  
Opal or MPO mitred corner modules.



**SILVER ANODISED**  
Anodised Matt Silver profile finish.



**COPPER**  
Powder-coated copper finish.



**ASYMMETRIC WALLWASH**  
Asymmetric LED profile for wall-wash



**60 YEARS  
IN LIGHT**

**FOR MORE INFORMATION  
OR TO TALK ABOUT A PROJECT:**

CALL: +44 (0) 1235 55 37 69  
EMAIL: [sales@optelma.co.uk](mailto:sales@optelma.co.uk)

ISSUE DATE: 11/09/20

**HEAD OFFICE**  
The Science Park  
Abingdon  
Oxfordshire  
OX14 3YT

**SHOWROOM**  
23 Bowling Green Lane  
Clerkenwell  
London  
EC1R 0BD

**PARIS OFFICE**  
28 Rue Charles  
Baudelaire  
75012 Paris  
France

**SWISS OFFICE**  
St. Urbangasse 53  
Postfach 1738  
CH-4502 Solothurn  
Switzerland

## SAM 130 SPECIFICATION CODE

AAAA - BB/C/D/E - F/GGG - HHHH/I										
AAAA PRODUCT ID	BB MOUNTING	C FINISH	D DRIVER	E DIFFUSER	F DIRECT LED	GGG CRI/ COLOUR	F DIRECT LED	GGG CRI/ COLOUR	HHH LENGTH (mm)	I EMERGENCY
SA13	SM SP	B W S G C X*	F D 1 T C	O M W S	M H	827 830 840 927 930 940	M H	827 830 840 927 930 940	XXXX* LENGTH IN MM	E

**MOUNTING** 'SM' Surface Mounted, 'SP' Suspended Parallel  
**FINISH** 'B' Black, 'W' White, 'S' Silver, 'G' Champagne Gold, 'C' Copper  
**DRIVER** 'F' Fixed Output, 'D' DALI, '1' 1-10V, 'T' Touch Dim, 'C' Casambi control  
**DIFFUSER** 'O' Opal, 'M' MPO, 'W' Asymmetric Wallwasher, 'S' Satin Louver  
**DIRECT LED** 'M' Medium power, 'H' High power  
**CRI / COLOUR** '827' CRI 80+ Colour 2700K, '830' CRI 80+ Colour 3000K, '840' CRI 80+ Colour 4000K, '927' CRI 90+ Colour 2700K, '930' CRI 90+ Colour 3000K, '940' CRI 90+ Colour 4000K  
**DIRECT LED** 'M' Medium power, 'H' High power  
**CRI / COLOUR** '827' CRI 80+ Colour 2700K, '830' CRI 80+ Colour 3000K, '840' CRI 80+ Colour 4000K, '927' CRI 90+ Colour 2700K, '930' CRI 90+ Colour 3000K, '940' CRI 90+ Colour 4000K  
**LENGTH** Modular lengths in millimetres  
**EMERGENCY** 'E' Integrated Emergency - specify details alongside code

+ 'RIGHT' or 'LEFT' 90° Corner, 'MULTISENSOR' Integrated PIR/Daylight sensors - specify details alongside code

### STANDARD

Standard fixed option products for quick and easy specification. Point source LED and Linear LED solutions, organised into Track & Spots, Downlights, Recessed, Surface, Suspended and Wall mounted solutions.

### MADE-TO-MEASURE

Versatile systems and luminaires with custom specifications for project-specific lighting. Available in custom sizes and lengths, with many options including curves, corners, finishes, integrated accessories and more.

### BESPOKE

Bespoke luminaires demonstrating completely custom project solutions, designed with the clients from concept to delivery. Learn about the design process and inspire your next bespoke lighting project.



**60 YEARS  
IN LIGHT**

#### FOR MORE INFORMATION OR TO TALK ABOUT A PROJECT:

CALL: +44 (0) 1235 55 37 69  
EMAIL: sales@optelma.co.uk

ISSUE DATE: 11/09/20

**HEAD OFFICE**  
The Science Park  
Abingdon  
Oxfordshire  
OX14 3YT

**SHOWROOM**  
23 Bowling Green Lane  
Clerkenwell  
London  
EC1R 0BD

**PARIS OFFICE**  
28 Rue Charles  
Baudelaire  
75012 Paris  
France

**SWISS OFFICE**  
St. Urbangasse 53  
Postfach 1738  
CH-4502 Solothurn  
Switzerland