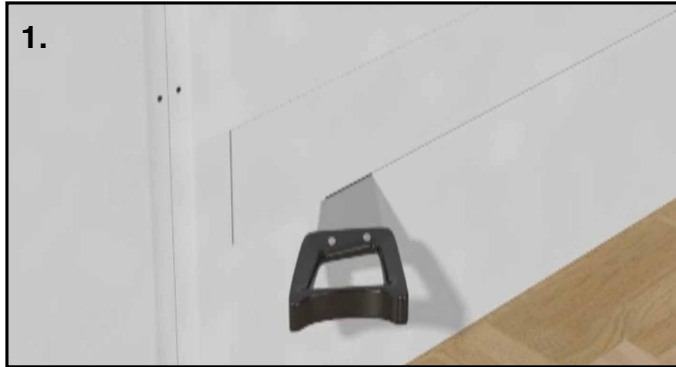
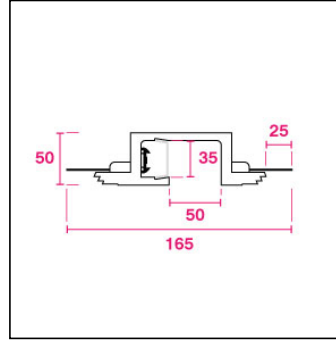


# MICROBLADE 50

**ID: MB50**

**TYPE: Made-to-Measure**

**MOUNTING: Recessed Plaster-in**



1.

**Cut Out Slot**

Cut out a slot in the drywall to the width of the plaster profile (not including metal tabs). For lengths see project-specific drawings.



2.

**Cut Out Slot**

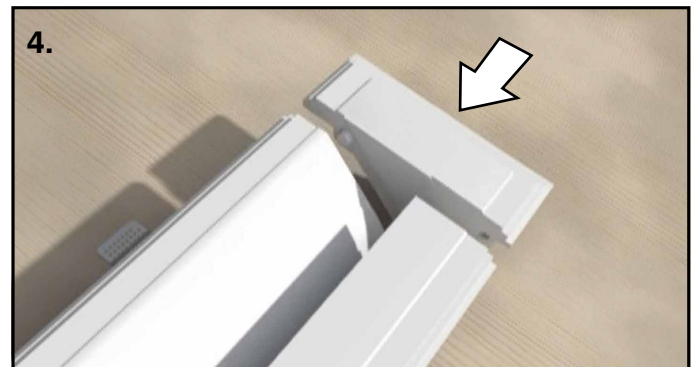
Remove the cut-out panel and check all edges are straight and true. Where necessary, place 24V drivers and power leads behind the plasterboard, ready to poke through plaster profiles.



3.

**Glue End Caps**

Apply plaster adhesive to the end caps.  
*(If you are not using end-caps with your solution, go to step 5)*



4.

**Attach End Caps**

Attach the end-caps and let them set, strong and secure. Drill any holes for lead-wires in through the back of the profile, ensuring it will be somewhere accessible, but NOT visible post-installation.



**60 YEARS  
IN LIGHT**

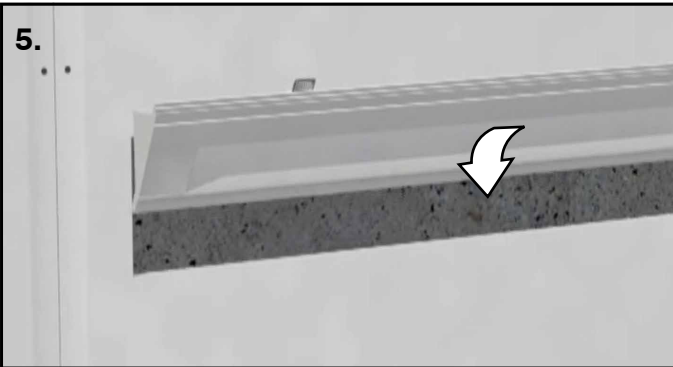
CALL: +44 (0) 1235 55 37 69  
EMAIL: sales@optelma.co.uk

**HEAD OFFICE**  
The Science Park  
Abingdon  
Oxfordshire OX14 3YT  
United Kingdom

**SHOWROOM**  
23 Bowling Green Lane  
Clerkenwell  
London EC1R 0BD  
United Kingdom

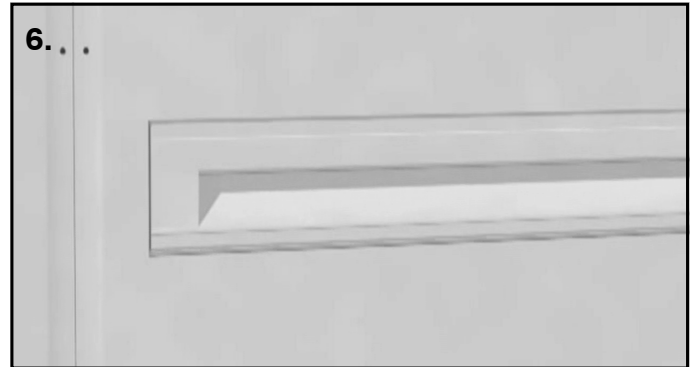
**PARIS OFFICE**  
28 Rue Charles  
Baudelaire  
75012 Paris  
France

**SWISS OFFICE**  
St. Urbangasse 53  
Postfach 1738  
CH-4502 Solothurn  
Switzerland



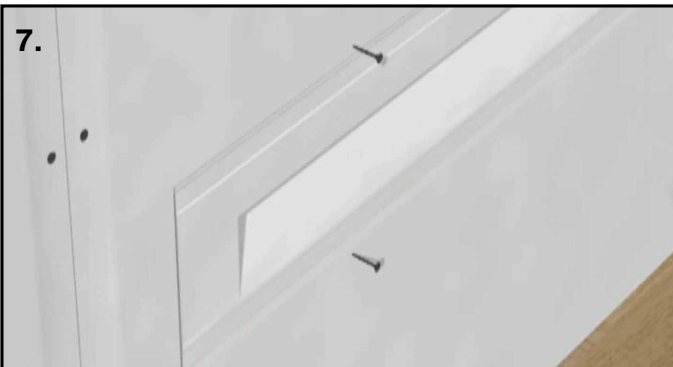
**5.**

**Place Into Slot**  
Guide the profile length into the cut-out slot, tilting to push it through and bringing it back forward so that the metal tabs sit against the back of the plasterboard.



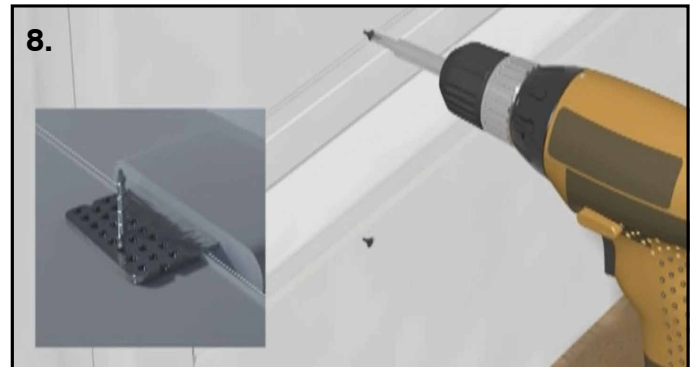
**6. . .**

**Position Profile**  
Pull the profile forward so the front face is flush with the plasterboard surface, and the tabs are held against the back of the plasterboard.



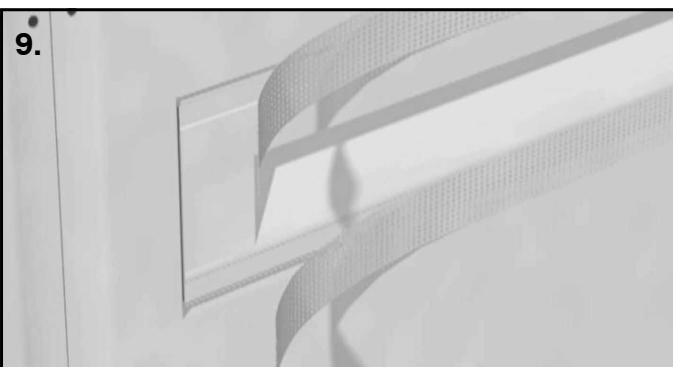
**7.**

**Screw Through Plasterboard**  
Noting the position of the metal tabs, screw through the plasterboard.



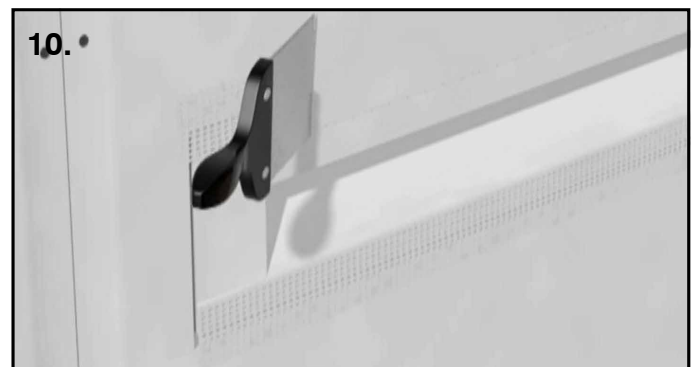
**8.**

**Don't Overtighten**  
Ensure that the screws grip through the metal tabs and pull the profile flush, but do not overtighten! This will ruin the integrity of the plasterboard.



**9.**

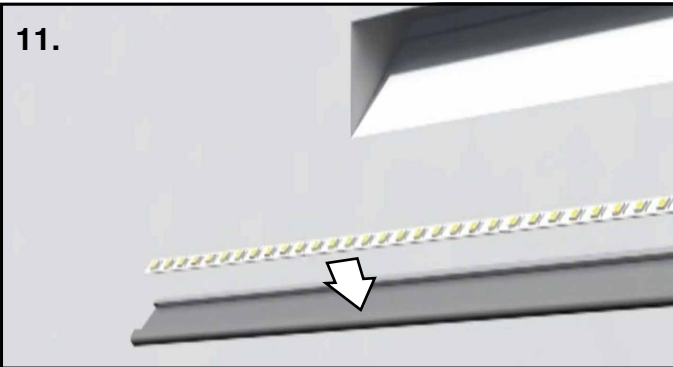
**Apply Mesh Tape**  
Apply mesh tape over the feathered joints. The wall/ceiling is now ready to be skimmed by a professional plasterer.



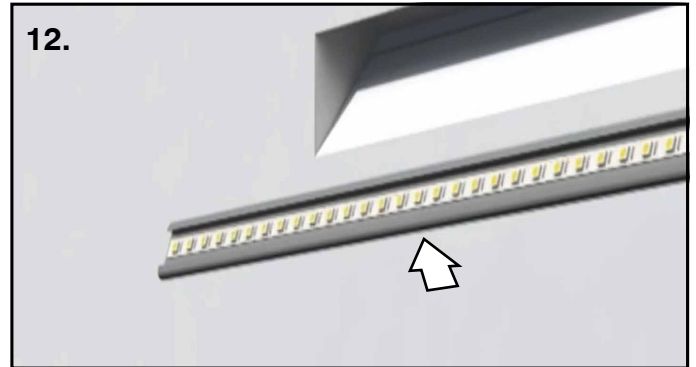
**10. •**

**Skim Over Seam**  
Plaster over the gap/seam with a thin skim layer. Taper toward the open profile gap. The finished result should seamlessly integrate into the wall/ceiling with no visible joints.

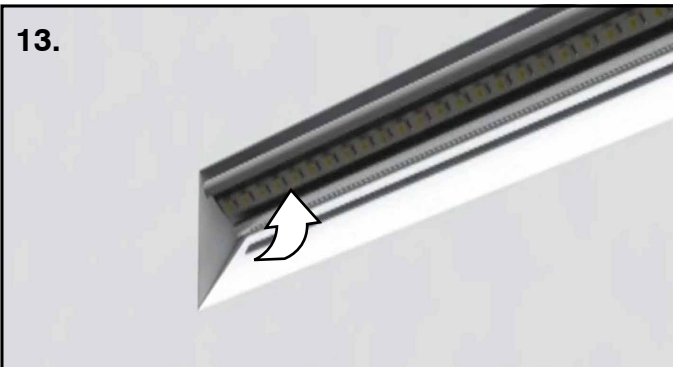




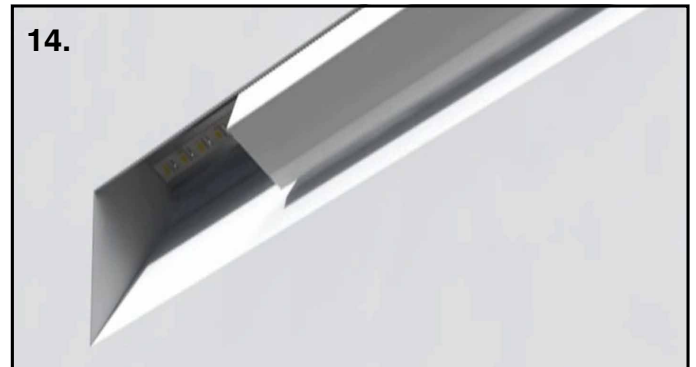
**11. Adhere LED Tape**  
Your profile may already come with tape installed. If not, stick the tape along the centre of the heatsink channel. Cut to length using the designated cut-points, and solder low-voltage lead wires on.



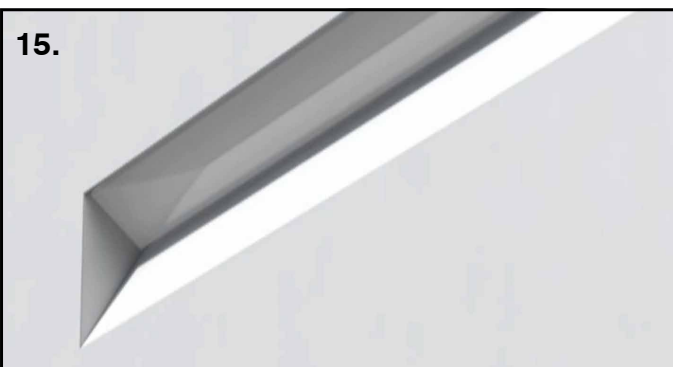
**12. Glue Heatsink Profile**  
Apply a long bead of glue to the back of the heatsink profile.



**13. Attach Heatsink Inside Plaster**  
Stick the heatsink inside the plaster profile channel, attaching to power and pushing through any slack lead wires. See cross-section for correct positioning.



**14. Insert Diffuser**  
If your plaster profile comes with a frosted Opal diffuser, slot it into the profile ensuring an even, level orientation.



**15. Paint Over Finished Profile**  
The profile is now ready to be painted to match the wall/ceiling around it. Remove the diffuser and protect the LED inside if you need to paint inside the plaster profile aperture.

