



# IVY ROUND TRIMLESS

## PLASTER-IN DOWNLIGHT



### KEY FEATURES

- Recessed trimless round Downlight
- 13W LED Engine run at varying mA to suit project requirements
- Bridgelux Thrive full spectrum LED source
- CRI 98 as standard
- 15°, 24°, 38°, 55° beam angles
- 30° directional adjustability
- 2700K, 3000K and 4000K colour temperatures
- Tunable white variation available
- Fixed Output, 1-10V, DALI Dim or Casambi control



**CASAMBI**

**60 YEARS  
IN LIGHT**

CALL: +44 (0) 1235 55 37 69

EMAIL: [sales@optelma.co.uk](mailto:sales@optelma.co.uk)

ISSUE DATE: 23/11/20

#### HEAD OFFICE

The Science Park  
Abingdon  
Oxfordshire OX14 3YT  
United Kingdom

#### SHOWROOM

23 Bowling Green Lane  
Clerkenwell  
London EC1R 0BD  
United Kingdom

#### FRANCE

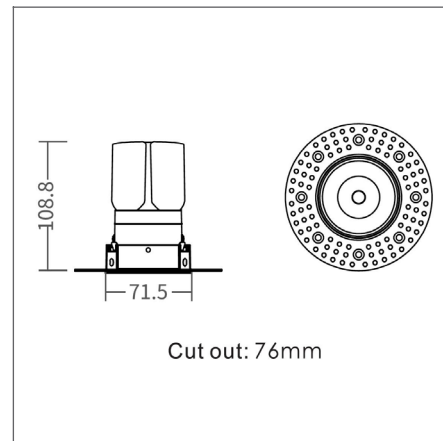
28 Rue Charles  
Baudelaire  
75012 Paris  
France

#### SWITZERLAND

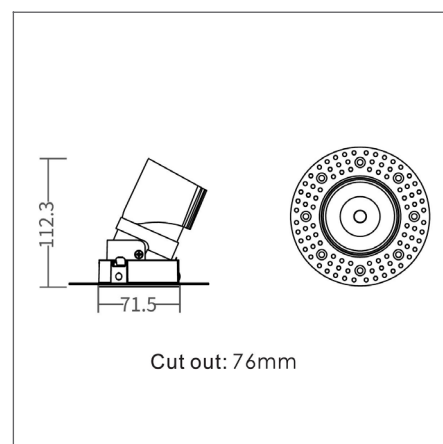
St. Urbangasse 53  
Postfach 1738  
CH-4502 Solothurn  
Switzerland

## IVY ROUND TRIMLESS DOWNLIGHT SPECIFICATIONS

PRODUCT OPTIONS	
Dimensions (mm):	See table below
Weight (kg):	< 1.0 kg
Lifetime:	50,000 hrs
Mounting type:	Recessed trimless
Finish:	Trim: Matt White, Matt Black (Custom RAL on request) Reflector: Black, White, Silver (Custom RAL on request)
Emergency:	N/A
Operating voltage:	230V
IP Rating:	IP20 (IP44 on request)
Direct Light source:	BridgeLux Thrive full spectrum LED
Driver:	Fixed Output, 1-10V dimming, DALI dimming, Casambi control
Colour temperature:	2700K, 3000K or 4000K, Tunable White
Beam Angle:	15°, 24°, 38°, 55°
Diffuser:	N/A
CRI:	98
Optional Extras:	Emergency conversions on request



FIXED DIMENSIONS (MM)

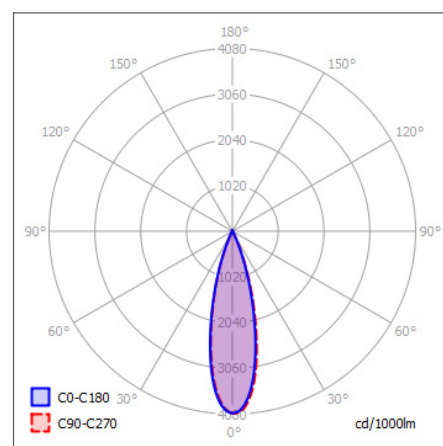


ADJUSTABLE DIMENSIONS (MM)

### CHOOSE FROM OUR RANGE OF SIZES AND OUTPUTS

Option	Dimensions	Cut-out	Connected Load	Power	Lumens @ 24° 4000K CCT
Tunable White	Ø72 (Visible) x 109	Ø76 mm	-	10 W	-
Fixed	Ø72 (Visible) x 109	Ø76 mm	9.5 W	8 W	639 lm
Adjustable	Ø72 (Visible) x 112	Ø76 mm	9.5 W	8 W	639 lm
Fixed	Ø72 (Visible) x 109	Ø76 mm	15 W	12.7 W	1016 lm
Adjustable	Ø72 (Visible) x 112	Ø76 mm	15 W	12.7 W	1016 lm

\*our drivers offer full control over mA supply. Please enquire if a different output is required for your specific project.



POLAR CURVE 24 DEGREE



**CASAMBI**

**60 YEARS  
IN LIGHT**

CALL: +44 (0) 1235 55 37 69  
EMAIL: sales@optelma.co.uk

ISSUE DATE: 23/11/20

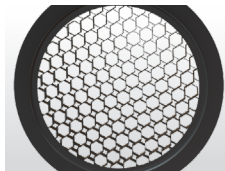
**HEAD OFFICE**  
The Science Park  
Abingdon  
Oxfordshire OX14 3YT  
United Kingdom

**SHOWROOM**  
23 Bowling Green Lane  
Clerkenwell  
London EC1R 0BD  
United Kingdom

**FRANCE**  
28 Rue Charles  
Baudelaire  
75012 Paris  
France

**SWITZERLAND**  
St. Urbangasse 53  
Postfach 1738  
CH-4502 Solothurn  
Switzerland

## COMPONENTS



### ANTI-GLARE HONEYCOMB

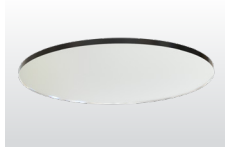
Honeycomb cover to assist in glare control.



**13W LED ENGINE**  
with Bridgelux Thrive LED chips, CRI 98.

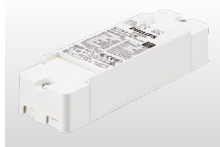


**GLOBAL OPTIC**  
15°, 24°, 38° and 55° beam angles.



### SOFTENING LENS

MPO style softening lens to assist with glare control.



### PREMIUM DRIVERS

Fixed Output, L&TE and DALI drivers.



### CASAMBI CONTROL

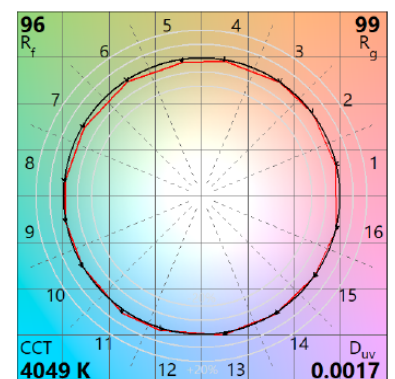
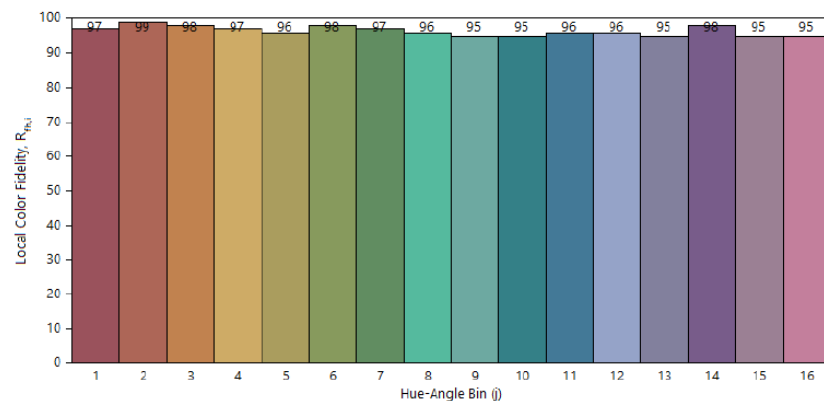
Casambi bluetooth control modules.

## LED SOURCE DATA OVERVIEW

Typical CRI values at  $T_c = 85^\circ$

Nominal CCT <sup>a</sup>	R <sub>f</sub>	R <sub>g</sub>	R <sub>1</sub>	R <sub>2</sub>	R <sub>3</sub>	R <sub>4</sub>	R <sub>5</sub>	R <sub>6</sub>	R <sub>7</sub>	R <sub>8</sub>	R <sub>9</sub>	R <sub>10</sub>	R <sub>11</sub>	R <sub>12</sub>	R <sub>13</sub>	R <sub>14</sub>	R <sub>15</sub>
2700K	95	103	97	99	94	94	97	98	97	98	99	97	91	98	98	95	98
3000K	95	104	98	99	93	94	97	98	96	96	97	96	92	95	98	95	97
3500K	95	98	98	98	97	98	98	98	98	97	93	97	97	95	98	97	98
4000K	97	100	99	99	97	99	99	99	99	98	94	97	99	96	99	98	98
5000K	97	100	98	99	98	98	98	98	99	98	95	98	98	98	98	98	97
5700K	94	98	98	98	97	95	98	97	96	95	92	97	96	96	98	98	97
6500K	95	98	98	98	97	96	98	98	96	96	93	97	96	97	98	98	97

TM-30 Graphs - Data shown @ 4000K



\*for full technical data on LED sources please contact Optelma Lighting.



**CASAMBI**

**60 YEARS  
IN LIGHT**

CALL: +44 (0) 1235 55 37 69  
EMAIL: sales@optelma.co.uk

ISSUE DATE: 23/11/20

### HEAD OFFICE

The Science Park  
Abingdon  
Oxfordshire OX14 3YT  
United Kingdom

### SHOWROOM

23 Bowling Green Lane  
Clerkenwell  
London EC1R 0BD  
United Kingdom

### FRANCE

28 Rue Charles  
Baudelaire  
75012 Paris  
France

### SWITZERLAND

St. Urbangasse 53  
Postfach 1738  
CH-4502 Solothurn  
Switzerland