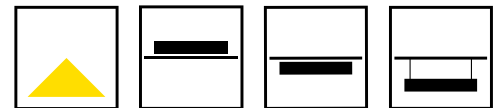


MAGNETO

LINEAR SYSTEM



KEY FEATURES

- 1M, 2M or 3M Track lengths with magnetic clip-in luminaires
- Recessed, Surface mounted or suspended lighting track
- 24V low voltage LED lighting accessories including opal linear, collimated optics and adjustable spotlights
- A wide range of available accessories including 90° corners, 90° change-of-plane, T-junctions and crosses
- Control options include Fixed Output and DALI dimmable
- Matt Black or Matt White finishes as standard



**60 YEARS
IN LIGHT**

CALL: +44 (0) 1235 55 37 69
EMAIL: sales@optelma.co.uk
ISSUE DATE: 21/01/20

HEAD OFFICE
The Science Park
Abingdon
Oxfordshire OX14 3YT
United Kingdom

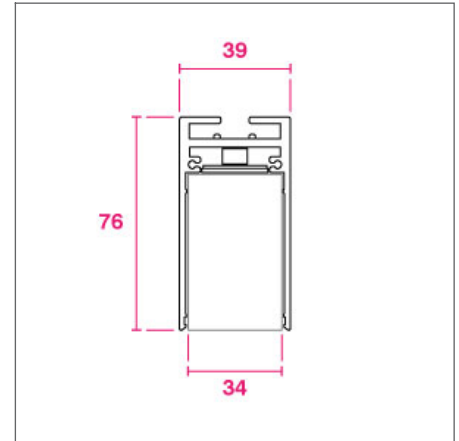
SHOWROOM
23 Bowling Green Lane
Clerkenwell
London EC1R 0BD
United Kingdom

FRANCE
28 Rue Charles
Baudelaire
75012 Paris
France

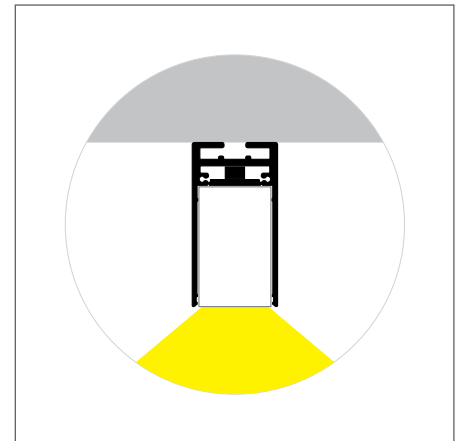
SWITZERLAND
St. Urbangasse 53
Postfach 1738
CH-4502 Solothurn
Switzerland

MAGNETO SPECIFICATIONS

PRODUCT OPTIONS	
Dimensions (mm):	39 (W) x 76 (H) x 1000/2000/3000mm or <i>Made-to-Measure Lengths</i>
Cut-out (mm):	39 (W) x 76 (H)
Weight (kg):	< 1.5 kg per Metre
Lifetime:	50,000 hrs
Mounting type:	Recessed, Surface Mounted, Suspended
Finish:	Matt Black, Matt White
Emergency:	N/A
Operating voltage:	24V
IP Rating:	IP20
Light source:	Assorted LED accessories listed below
Driver:	Fixed Output, DALI Dimming
Colour temperature:	2700K, 3000K, 4000K
Beam Angle:	N/A
Diffuser:	Opal Linear, Collimated Optic Linear, LED Spot
CRI:	90+
Optional Extras:	L, T or X Corners and Inner and Outer change-of-plane accessories



CROSS-SECTION DIMENSIONS (MM)

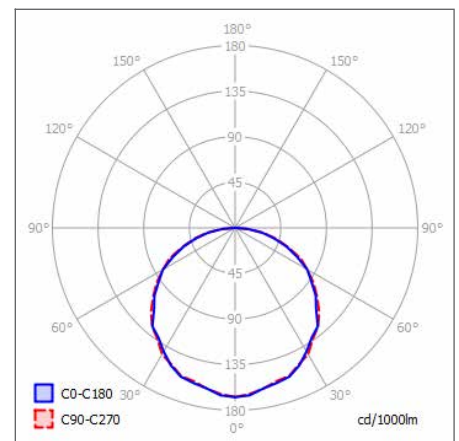


DISTRIBUTION

CUSTOMISE YOUR MAGNETO SYSTEM WITH OUR RANGE OF LED ACCESSORIES

LED Light Source*	Dimensions (mm)	Output (lm)	Power (W)
MAG1 Opal Linear 640	34(W) x 56(H) x 640(L)	1480 lm	26 W
MAG2 Opal Linear 958	34(W) x 56(H) x 958(L)	1621 lm	39 W
MAG3 12°/34°/48° Optic x6	34(W) x 55.5(H) x 163(L)	460 lm	8 W
MAG4 12°/34°/48° Optic x12	34(W) x 55.5(H) x 322(L)	850 lm	15 W
MAG5 90° Adj. Optic 12°/34°/48°x6	34(W) x 179(H) x 163(L)	460 lm	8 W
MAG6 90° Adj. Optic 12°/34°/48° x12	34(W) x 179(H) x 322(L)	850 lm	16 W
MAG7 34Ø Spot 20°/40°	34(W) x 100(H) x 80(L)	350 lm	5 W
MAG8 34Ø Twin-Spot 20°/40°	34(W) x 100(H) x 80(L)	700 lm	10 W
MAG9 70Ø Spot 18°/24°/36°	34(W) x 134(H) x 168(L)	1450 lm	20 W

* Outputs for 4000K LED



POLAR CURVE 4000K OPAL



**60 YEARS
IN LIGHT**

CALL: +44 (0) 1235 55 37 69

EMAIL: sales@optelma.co.uk

ISSUE DATE: 21/01/20

HEAD OFFICE

The Science Park
Abingdon
Oxfordshire OX14 3YT
United Kingdom

SHOWROOM

23 Bowling Green Lane
Clerkenwell
London EC1R 0BD
United Kingdom

FRANCE

28 Rue Charles
Baudelaire
75012 Paris
France

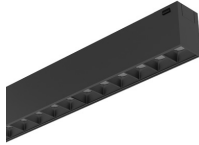
SWITZERLAND

St. Urbangasse 53
Postfach 1738
CH-4502 Solothurn
Switzerland

MAGNETO COMPONENTS



OPAL LINEAR LED
Magneto Opal LED
Linear modules.
MAG1/MAG2



LINEAR OPTIC LED
Collimated Linear
LED Optics.
MAG3/MAG4



**ADJUSTABLE
LINEAR OPTIC LED**
Adjustable Collimated
Linear LED Optics.
MAG5/MAG6



**34° LED
SPOTLIGHT** Small
5W Adjustable LED
Spotlight. MAG7



**34° TWIN LED
SPOTLIGHT**
2 x 5W Adjustable
LED Spotlight. MAG8



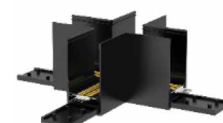
**60° LED
SPOTLIGHT**
Small 6W Adjustable
LED Spotlight.
MAG9



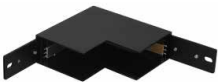
L CORNER
90° Track Accessory
123 x 123 x 76 mm.



T CORNER
2x 90° Track
Accessory
140 x 90 x 76 mm.



X CORNER
4x 90° Track
Accessory
140 x 140 x 76 mm.



INNER CORNER
90° change-of-plane
123 x 123 x 76 mm.



OUTER CORNER
90° change-of-plane
123 x 123 x 76 mm.



MAGNETIC TRACK
48V magnetic linear
lighting track in 1M,
2M or 3M Lengths.



**60YEARS
IN LIGHT**

CALL: +44 (0) 1235 55 37 69
EMAIL: sales@optelma.co.uk
ISSUE DATE: 21/01/20

HEAD OFFICE
The Science Park
Abingdon
Oxfordshire OX14 3YT
United Kingdom

SHOWROOM
23 Bowling Green Lane
Clerkenwell
London EC1R 0BD
United Kingdom

FRANCE
28 Rue Charles
Baudelaire
75012 Paris
France

SWITZERLAND
St. Urbangasse 53
Postfach 1738
CH-4502 Solothurn
Switzerland

MAGNETO SPECIFICATION CODE

AAAA - BB/C/D/E - F/GGG - HHHH/I								
AAAA PRODUCT ID	BB MOUNTING	C FINISH	D DRIVER	E DIFFUSER	F DIRECT LED	GGG CRI/ COLOUR	HHH LENGTH (mm)	I EMERGENCY
MAGN	RE SM SU	B W X*	F D	O C X*	MAG1 MAG2 MAG3 MAG4 MAG5 MAG6 MAG7 MAG8 MAG9	927 930 940	1000 2000 3000 XXXX* LENGTH OF TRACK	N/A

- * **X** Custom Options - specify details alongside code
- MOUNTING **RE** Recessed, **SM** Surface Mounted, **SU** Suspended
- FINISH **B** Matt Black, **W** Matt White, **X** Other - specify details alongside code
- DRIVER **F** Fixed Output, **D** DALI
- DIFFUSER **O** Opal, **C** Collimated Optic,
- DIRECT LED **MAG1** Opal Linear 640, **MAG2** Opal Linear 958, **MAG3** 25°/40° Optic x6, **MAG4** 25°/40° Optic x12, **MAG5** 90° Adjustable Optic 25°/40° x6, **MAG6** 90° Adjustable Optic 25°/40° x12, **MAG7** 34Ø Spot 20°/40°, **MAG8** 34Ø Twin-Spot 20°/40°, **MAG9** 60Ø Spot 15°/28°/40°/60°,
- CRI / COLOUR **927** CRI 90+ Colour 2700K, **930** CRI 90+ Colour 3000K, **940** CRI 90+ Colour 4000K
- LENGTH Made-to-Measure length of the Track in millimetres
- EMERGENCY N/A
- +ACCESSORIES specify details alongside code:
+L Corner, +T Corner, +X Corner, +Inner Corner, +Outer Corner

STANDARD

Standard fixed option products for quick and easy specification. Point source LED and Linear LED solutions, organised into Track & Spots, Downlights, Recessed, Surface, Suspended and Wall mounted solutions.

MADE-TO-MEASURE

Versatile systems and luminaires with custom specifications for project-specific lighting. Available in custom sizes and lengths, with many options including curves, corners, finishes, integrated accessories and more.

BESPOKE

Bespoke luminaires demonstrating completely custom project solutions, designed with the clients from concept to delivery. Learn about the design process and inspire your next bespoke lighting project.



60 YEARS IN LIGHT

CALL: +44 (0) 1235 55 37 69
EMAIL: sales@optelma.co.uk
ISSUE DATE: 21/01/20

HEAD OFFICE

The Science Park
Abingdon
Oxfordshire OX14 3YT
United Kingdom

SHOWROOM

23 Bowling Green Lane
Clerkenwell
London EC1R 0BD
United Kingdom

FRANCE

28 Rue Charles
Baudelaire
75012 Paris
France

SWITZERLAND

St. Urbangasse 53
Postfach 1738
CH-4502 Solothurn
Switzerland